



### Pre-Purchase Condition Survey

23<sup>rd</sup> and 24<sup>th</sup> March 2017

Princess V70 [REDACTED]  
RMS Registration: [REDACTED]  
HIN: GB-PYIP8034H708



## Table of Contents

<b>1. Introduction.....</b>	<b>3</b>
Conditions .....	3
Scope .....	3
Limitations of Access .....	3
A, B, Classification .....	3
Abbreviations .....	3
<b>2. Vessel Particulars .....</b>	<b>4</b>
<b>3. Construction .....</b>	<b>4</b>
General Arrangement .....	4
<b>4. Hull &amp; Deck – External .....</b>	<b>5</b>
Below waterline .....	5
Topsides .....	5
Main deck and superstructure .....	5
Aft main deck .....	5
<b>5. Hull &amp; Deck – Internal .....</b>	<b>6</b>
Structural .....	6
Accommodation .....	6
<b>6. MTU 10V-2000 .....</b>	<b>7</b>
<b>7. Onan MDKBS-5856111 .....</b>	<b>7</b>
<b>7. Thru-hulls, valves, pumps and plumbing .....</b>	<b>8</b>
<b>8. 24 VDC, 240/415 VAC and AV .....</b>	<b>9</b>
12 VDC .....	9
240 VAC .....	9
Audio-Visual .....	9
<b>10. Rudders, steering, autopilot and trim tabs .....</b>	<b>10</b>
<b>11. LPG and Fire fighting .....</b>	<b>10</b>
<b>12. NavCom and EPIRB .....</b>	<b>11</b>
<b>13. Safety equipment, tender, jetski and ground tackle .....</b>	<b>11</b>
<b>14. Summary .....</b>	<b>12</b>
<b>15. Limitations of liability .....</b>	<b>13</b>
Scope of report .....	13
Third Parties .....	13
Warranties .....	13
Variations .....	13
<b>16. Appendix 1 – survey photographs .....</b>	<b>14</b>
<b>17. Appendix 2 – extract from V70 manual .....</b>	<b>18</b>

## 1. Introduction

This is to certify on the instruction of [REDACTED], prospective purchaser of the Princess V70 [REDACTED]. The undersigned made a pre-purchase condition survey at Versace Marina and out of water at Boat Works Queensland on Thursday 23<sup>rd</sup> and Friday 24<sup>th</sup> March 2017.

### Conditions

Weather, 26 °C overcast with occasional rain  
 Static in-water survey at Versace marina  
 Vessel systems identified and tested  
 Out of water survey in slings at Boatworks  
 Independent marine mechanics inspection  
 Sounding, moisture, battery, RCD and polarity

### Scope

This survey report identifies the vessel and its structural and cosmetic condition afloat and out of water. The operation and condition of the vessels systems and equipment, and machinery on trial. Safety equipment and compliance for the intended use and area of operation, including insurance appraisal.

### Limitations of Access

1. Core material to the decks, superstructure, bulkheads and internal structure
2. Hull & deck to the accommodation in way of fixed linings, ensuites and furniture
3. Hull in way of the aluminium diesel, plastic water and holding tanks and their internal condition
4. Aluminium diesel tanks, complete external condition in way of insulation, engines and the hull

### Classification of survey findings

	Findings	Recommended
<b>A</b>	Critical safety issue with the risk of structural failure, flooding, instability, fire, explosion, electrocution, pollution, injury or loss of life, for priority repair before further navigation	
<b>B</b>	Significant issue that may affect or compromise safe operation and navigation for repair within (2) months and in any event prior to open-waters navigation	
<b>C</b>	Minor, cosmetic, service, maintenance, advisory and potential high-cost issues, recommended within service, maintenance and refit schedules	

### Abbreviations

**LOA** Length Overall, **Lh** Length of hull, **LWL** Load Waterline Length, **HIN** Hull Identification Number  
**FRP** Fibreglass Reinforced Plastic, **Stbd** Starboard, **SS** Stainless Steel, **Dom** Date of Manufacture.  
**NDT** Non-Destructive Testing, **WOT** Wide Open Throttle, **PSS** Propeller Shaft Seal, **RCD** Residual Current Device, **AV/IT** Audio-Visual/Information Technology, **HWS** Hot Water Service, **LPG** Liquefied Petroleum Gas, **LCD** Liquefied Crystal Display, **CPU** Computer Processor, **AIS** Automatic Identification System, **EPIRB** Emergency Position Indication Radio Beacon, **MMSI** Maritime Mobile Service Identity.  
**RMS** Roads & Maritime Services, NSW, **MSQ** Maritime Safety QLD, **AMSA** Australian Maritime Safety Authority. **AS 3000 & 3004.1:2014** 240/415 VAC, **AS5601** LPG, **AS4758** Lifejackets

*Items in italics* sourced from the design particulars and plans in the boat manual, research and the sale listing including *dimensions, dry weight, tank capacities, laminate and core schedules* were not verified.

Part 15 for the limitations of liability further references the scope of this survey report.

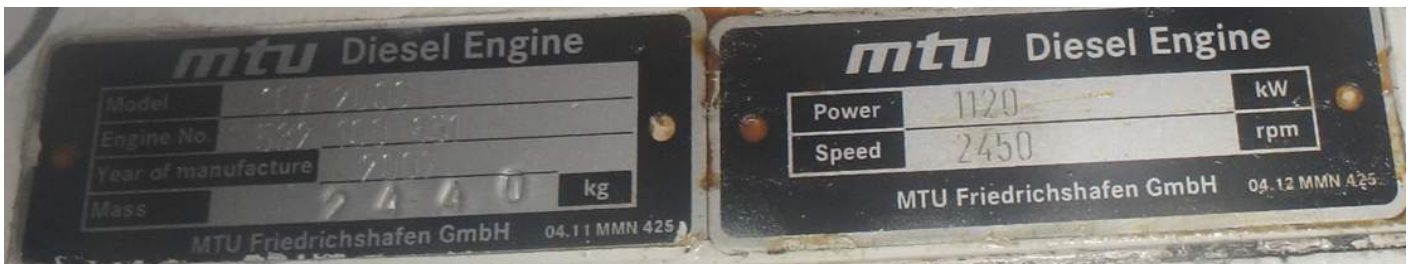
### E-Marine Survey Services

- Pre-purchase Condition Marine Surveys
- Condition & valuation for insurance appraisal
- Marine insurance claims assessment
- Valuations for insurance, finance, legal and customs
- Non-destructive testing for underlying condition
- Consultancy for repair, refit and new construction



## 2. Vessel Particulars

<b>Name:</b>		<b>LOA:</b>	21.39 m	including aft platform
<b>Design:</b>	Princess V70	<b>Lh:</b>	20.0 m	length of hull
<b>Builder:</b>	Princess Yachts UK in 2008	<b>Beam:</b>	5.08 m	Including gunwales
<b>RMS Reg:</b>		<b>Draft :</b>	1.35 m	including propellers
<b>HIN:</b>	GB-PYIP8034H708	<b>Dry Weight:</b>	35,500.00 kg	per design
<b>Engines:</b>	MTU 10V-2000	<b>Serial Numbers:</b>	532100652	532100651



## 3. Construction & General Arrangement

Medium semi displacement hard chine planing hull, production fibreglass sports motor yacht  
Solid laminate hull, composite cored decks and superstructure, laminate and core schedules unknown.

